



BTI

Bradley Tanks, Inc.



Statement of Qualifications

2019

NORTHERN CALIFORNIA

402 Hartz Avenue, Building C
Danville, CA 94526
p: 925-229-2900 | f: 925-553-2616

SOUTHERN CALIFORNIA

3272 Greyhawk Ct.
Carlsbad, CA 92010
p: 760-642-2712 | f: 707-317-0076





Bradley Tanks, Inc
402 Hartz Avenue, Building C
Danville, CA 94526
925-229-2900
www.btienviromental.com

EXECUTIVE SUMMARY

Bradley Tanks, Inc (BTI) specializes in equipment rental, transportation services and excavation services working in the fields of environmental remediation, construction and underground utilities. BTI is a small business and certified woman & minority owned business.

The cornerstone of BTI is frac tank rentals which remains as a core business unit since its beginning in 1999. Over the past twenty years, BTI has grown its frac tank inventory to over 350 tanks with various sizes and types of tanks available. Tanks are deployed throughout the contiguous United States, Alaska, Hawaii and Guam.

Transportation and disposal services are supported by our fleet of tractors and trailers hauling non-hazardous and hazardous wastes, both solid and liquid materials. BTI has end dump trailers, steel trailers, rocket launchers and vacuum trailers. In the past ten years, we have become one of the largest hazardous waste transporters in California.

BTI has always looked to the future for new opportunities, new approaches to projects and new equipment designs. This forward thinking has allowed us to stay ahead of environmental service needs. BTI has invested, designed and manufactured a number of pieces of equipment new to the environmental industry and useful to many clients. With this in mind, BTI's continued its growth with the newest business unit Dry Suction Excavation. Using first of its kind technology in the United States, BTI's Dino unit is unbeatable in terms of underground utility non-destructive, highly productive, safe excavations.

BTI assembled a team of professionals with multiple years of experience who use best management practices from finance, transportation, operations, safety and waste regulations learned and developed throughout their careers. Our management team works with clients throughout project planning and execution. BTI will work to ensure that all our operations are conducted safely, production goals are achieved and we provide high quality equipment, personnel and services.

The pairing of quality, innovative equipment and our professional team has allowed BTI to be successful and to continually pursue specialty equipment and new concepts for our industry.

BTI Successes

- BTI was awarded the 2016 Pacific Gas & Electric Gas Operations Supplier of the Year. With over 1,000 nominated companies, BTI is extremely proud of this recognition of our hard work, innovation, cost cutting evaluations and dedication to meeting our clients' needs and goals.
- One Million Tons! BTI has shipped over one million tons of contaminated soil from our project site at Camp Pendleton. The remediation project at Camp Pendleton SMEAF generated both non-hazardous and hazardous soils and BTI managed all 40,000 truckloads with no incidents.
- BTI has the first high powered dry, suction excavation unit in the United States - DINO. Using 24,000 CFM and a dual fan system, the unit can safely remove soil from around underground utilities. The resulting spoils from excavation are dry and can be immediately reused or directly unloaded into a 20CY bin on location. This unit is a sharp comparison to hydrovac units by eliminating the downfalls of using wet excavation.
- BTI successfully applies our knowledge of landfill waste acceptance permits to waste lab results and presents new, alternative disposal options to clients and substantial transportation and disposal costs savings.
- We have current licenses and permits to transport non-hazardous, California hazardous/non-RCRA hazardous, RCRA hazardous and PCB hazardous wastes.
- BTI successfully passes the rigorous California transporter BIT inspections each time.
- We have an extensive and diverse fleet of transportation equipment and containers.
- BTI invests in new, quality equipment that passes 3rd party inspections, contributes to NOx and PM reduction requirements through CARB compliance.
- BTI has supported our clients with the specialized permits and ability to haul wastes from California out of state to Oregon, Utah, Arizona, Nevada, Texas and Idaho.
- BTI has a clean safety record with no incidents at any project sites.
- Our Health and Safety program, DOT program and Personnel training and certifications continually meet and exceed our clients' audits requirements.
- As a certified Woman, Minority Owned Company, we help our clients meet contract diversity goals.

We are dedicated to understanding your unique environmental requirements and combining the best solutions with a highly trained and knowledgeable management team for a successful, safe project.

BTI Capabilities and Services

Equipment

In addition to our transportation fleet and containers, BTI has a large inventory of tanks. We have over 350 frac tanks.

Tank Types:

21K Closed Tops 18K Open Tops 10K Closed and Open Tops 8.4K Closed and Open Tops	16K Double Wall Tanks 10K Double Wall Tanks 6K Poly Tanks 17.8 K Weir Tanks 7.3K Weir Tanks	10K Mud Tanks 6K Mud Tanks 3K Mud Tanks 20K Mix Tanks
---	---	--

Applications: Liquid containment solutions in environmental and industrial applications for storage of hazardous and non-hazardous liquids and semi-solids. The tanks are used to maintain storm water runoff, contain liquids during dewatering efforts, in wastewater treatment systems, in oil production fields and as general storage.

Special Features: BTI tanks are coated with Phenoline 310 epoxy, have contoured full drain bottoms, smooth walls with no internal bracing for easy cleaning, equipped with multiple valves (front and rear), liquid level gauges, manifolds (interior or exterior). OSHA approved integrated stairways with larger walkways and platforms.

Containers / Equipment Available:

20CY Bins 40CY Bins 25CY Vac Boxes Wash Bay	Low Pro Bins Slide Top Bins Phase Separators
--	--

Equipment Spec Sheets: Additional equipment details are noted on our equipment specification sheets including strapping charts and are available upon request. Frac Tanks are sometimes referred to as Baker Tanks.

Mud Tanks

With the environmental need to contain hydrovac wet spoils in a controlled and above ground system, BTI designed and manufactured the mud tank. Using our industry knowledge, manufacturing connections and financing, BTI worked to solve our clients' needs with this piece of equipment. Hydrovac trucks produce wet spoils which are a difficult to manage by-product

of the operation. The mud tank has the capacity to hold multiple hydrovac loads. The rugged structure withstands heavy usage and yellow iron can excavate out dried solids without compromising the waste containment structure. This equipment is used throughout PG&E operations and by private clients needing containment of semi-solid / slurry waste.



BTI Mud Tanks

Wash Bays

The Wash Bay is another designed and manufactured piece of equipment by BTI. It offers the same controlled, above ground containment as the mud tank, but is used at temporary locations and small projects. The unit is an all-in-one piece of equipment including a ramp and basin for wet spoils for HydroVac trucks to drive onto and dump into. The Wash Bay is easily transported and set up at a site, has a small footprint, does not require ramp builds and can be simply demobilized.



BTI Wash Bay

Transportation

BTI is a fully permitted and licensed hazardous and non-hazardous waste transporter with highly skilled and trained operators and a large fleet of tractors and trailers.

Trailer Types:

Aluminum End Dumps Steel Rock Trailers 120 BBL Vacuum Trailers 130 BBL Vacuum Trailers	Rocket Launchers Roll Off Trucks Transfer Trucks	Walking Floor Trailers High Side Trailers
---	--	--

BTI equipment is designed to maximize performance and safety:

Auto Tarps: All BTI equipment is self-tarping. The auto tarp is a fast, efficient and safe opportunity to cover the waste load for shipping and is operated from inside the tractor unit.

Gauges: All BTI tractors have on-board gauges. BTI drivers can evaluate the weight of the load while at a project site. This specialty feature allows all loads to be maximized.

CARB Compliant: BTI tractors are 2010 or newer which contribute to low NOx and PM emissions. All tractors are CARB compliant.

End Dump Trailers: BTI end dump trailers are top of the line Vantage Aluminum 38 foot long, Teflon coated, gasketed sealed gates and are equipped with automatic tarps. All of the end dumps are the lightest weight and most durable in the market allowing more tons per load.

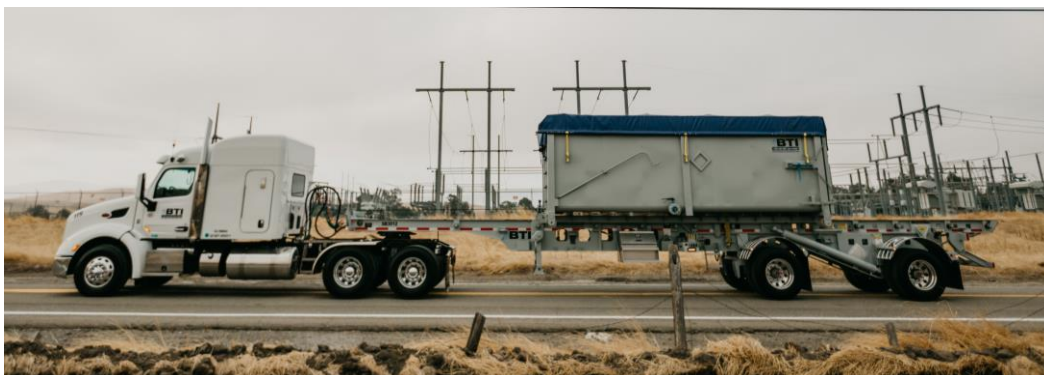
Rocket Launchers & Bins: BTI rocket launchers can haul 20CY and 40CY bins.

Vacuum Trailers: BTI has both stainless steel and carbon steel which means we can accommodate many different types of liquid transportation needs. The trailers are 120 bbl (5,000 gallon) and 130 bbl (5,460 gallons) vacuum trailers.

BTI Safe Transportation Program. Our program specifies that all tractors and trailers go through a mandatory Level 1 CHP inspection along with weekly equipment review by the BTI Project Manager. BTI has a truck pre-inspection program and check list that is used on projects. Prior to loading, trucks are inspected for safety and any other equipment issues.

Equipment and Operator Permits: Our equipment is licensed and permitted to haul non-hazardous contaminated wastes, non-RCRA/California hazardous waste, RCRA hazardous waste and PCB waste in California and out of state. BTI drivers are licensed and trained in DOT and OSHA mandatory issues pertaining to waste hauling, hazardous waste hauling and out of state hauling and are HAZWOPER certified. Our drivers carry permit binders, emergency action plans and PPE including fire suits and respirators.

Equipment Spec Sheets: Additional equipment details are noted on our equipment specification sheets which are available upon request.



Excavation

DINO – DRY Suction Excavation

Over two years ago, Bradley Tanks, Inc (BTI) introduced first of its kind, innovative excavation technology, the Dino, to the United States. The Dino provides high powered, precision excavation, dry suction excavation by using dual fans and 24,000 cfm. BTI invested in this technology in order to offer a new, environmentally relevant, productive solution to the field of excavation when working around critical underground utilities. However, other project types such as gravel removal, ballast removal around tracks, tree root exposure and pipe/canal cleanout also benefit from the units key features.



- ✓ 2 Sizes of Dino's with a 10CY or 4CY onboard debris bin
- ✓ 24,000 CFM of suction created by a dual fan system
- ✓ 10" Dig Tube with the ability to reduce down to 8", 6" and 4" tubes
- ✓ 80 Ft + in laydown hose extension can be applied without losing effective suction
- ✓ Excavation using an air, not water
- ✓ Multiple on-board tools including air lance, jack hammer, spaders allow our crews to perform various functions on-site
- ✓ The unit can suction soil, water, mud, gravel and asphalt and concrete pieces
- ✓ Soil excavated is dry and can be unloaded on-site and immediately reused
- ✓ The unit can unload on-site without additional equipment set up or structures
- ✓ Excavated soil can be unloaded directly into a 20CY bin or directly onto the project site
- ✓ The Dino doesn't leave the project site to unload which equates to longer on-site production performance and no project down time.
- ✓ Import for backfill and transportation costs are avoided because excavated soil can be reused
- ✓ The Dino has built in safety features and fail-safe features for safe operations



The Dino is next to a stockpile of soil that it excavated and the soil will be reused on-site.



Dino unloading into stockpile on site.



Dino unloading into a 20CY bin.

MEDIA

- Bradley Tanks, Inc DINO unit Video: <https://vimeo.com/247087582>
- BTI and PG&E wet spoils and DINO units: This video discusses the difference between wet and dry excavation and how BTI has contributed to a good understanding of the difference in the type of material that results from excavation using water and excavations using air and the total project ownership considerations. This video was written by PG&E. <https://www.pgecurrents.com/2018/05/22/pge-diverse-supplier-innovates-for-cost-savings-and-environmental-sustainability/>
- MBE MAGAZINE: PG&E submitted an article to the MBE Magazine in 2018 featuring BTI and the Dino / Dry Suction Excavation units. PG&E Diverse Suppliers Innovate for Cost Savings and Environmental Sustainability. A copy is available upon request.

Equipment specification sheet and Dino Detailed Evaluation on Projects is available.

Project Services

Construction Management & Environmental Remediation

BTI has a team of people who participate in our projects with the goal of a successful and safe off-haul of contaminated wastes. Our investment in the project starts with the technical review of the analytical data and carries through to the on-site operations of our project managers and drivers.

Waste Characterization, Analytical Review and Waste Profiling: BTI is able to review and technically advise on sites with multiple analytical investigations, in-situ and stockpile data, and provide constructive feedback and options for landfill waste disposal approval. Project sites perform analytical for different purposes which don't necessarily correlate to landfill disposal characterization. BTI can technically analyze existing analytical data, obtain third party sampling, provide disposal options and solutions, complete profiles, and package the waste information so that it can be granted disposal approval at a landfill. After working at landfills for over 15 years, our personnel utilize their regulatory expertise and understanding of landfill permits to benefit our clients and each specific project. We have offered cost savings by uncovering new disposal options, eliminating double handling of waste on-site, eliminating the need for additional testing and minimizing hazardous wastes on-site.

Field Personnel – Project Managers: In the field, our team of project managers directs a number of daily items including: on-site and off-site truck routes, daily communication with drivers of the site rules, safety requirements and changes, provide truck control, provide daily reports, regularly conduct thorough equipment inspections and are our on-site direct communication with the client. Our project managers participate in the health and safety meetings and communicate those items to our drivers thereby providing project continuity and raising safety awareness. BTIs' project managers are 40 Hour Hazwoper trained and Traffic Control certified.

Transportation Services: In addition to the services provided by our Project Managers, BTI often assists with truck loading, portable scales with operator, gauge readers, truck decon and truck tarp rack services. On all of our projects, we assist with waste evaluation, waste profiling, landfill approval, landfill scheduling and disposal options.

Manifests & Disposal Paperwork: BTI manages the transportation paperwork. We provide pre-printed manifests and our project managers can assist with truck manifesting. Each month, BTI will provide all copies of manifests and landfill scale tags, both original copies and scanned copies. We provide up to date summary tonnage reports multiple times per week for real time project tracking.

Field Personnel – Mobile Regional Crews: BTI has a group of personnel that work throughout California on regional, mobile crews. Each crew is equipped with Mini-Excavators and other equipment, such as compressors, pumps and water buffalo. Crews are able to work at various project sites and provide on-site support in a cost effective manner. BTIs' field crews are qualified equipment operators, 40 Hour Hazwoper trained, Gold Shovel trained and Traffic Control certified.

Projects & Clients

BTI has worked on many projects providing on-site services, loading, transportation and disposal for non-hazardous and hazardous soil, liquids and debris. Underground utility and excavation projects highlight the dry suction excavation equipment and safe, efficient work. Construction projects range from material movement on-site to bunker builds. Our project scopes vary as we met the needs and requests of our clients.

Safety is our first priority at all project sites and BTI has operated safely, with no incidents, at all of our project sites.

USMC MCB Camp Pendleton Stuart Mesa East Agricultural Field – One Million Tons

Project Total: Over One Million Tons & 40,000 Truck Loads

BTI hit a mile stone in 2017 by reaching a project total one million tons hauled from the same project site. One million tons equated to 40,000 loads hauled off the project site, safely. Our success on this project started with understanding local landfill permits which allowed us to provide two disposal locations and use regulatory waste approval techniques to minimize hazardous waste on-site; thus saving the base millions of dollars in transportation and disposal.

- Project work spanned 2010, 2011, 2012, 2013, 2014, 2017 and 2018
- At the peak of the project, BTI was processing 300 truckloads per day.
- Project consisted of contaminated non-hazardous soils and hazardous soils
- Project support consisted of on-site truck processing (including manifesting, equipment inspections, gauge reading, tarp racks) and transportation and disposal

Santa Clara Valley Water District

Currently, BTI provides transportation and disposal services to Santa Clara Valley Water District (SCVWD) and water treatment solids generated at three treatment facilities in Santa Clara County. BTI provides end dump trailers stationed at the treatment facility for direct loading of the waste and we provide end dumps for backhoe loading on a weekly basis. This is a weekly service project. Project Dates: June 2015 to current.

OHL, USA-Carriage Crest Park – City of Carson CA

BTI worked with OHL, USA in the City of Carson to haul 11,000 tons of non-RCRA material and 8,700 tons of non-hazardous material in total. We provided 20-30 end dumps per day to safely haul the material to South Yuma County Landfill and Simi Valley Landfill. Project Dates: August 2018 to present.

Innovative Construction Solutions- Oakland, CA

BTI worked with Innovative Construction Solutions hauling 45,500 tons of contaminated soil. Utilizing aluminum end dumps with auto tarps, we hauled to Class I hazardous waste landfills and local Class II non-hazardous waste landfills. Project Dates: June 2018 to September 2018.

Caltrans – Northern and Southern, CA

BTI has proudly assisted Caltrans safely on multiple projects. Project include day time and night time transportation with on-site project management. One of our many Caltrans project started in May 2018 at which we provided end dump trucks to transport 9,880 tons, which is over 400 loads, of non-RCRA, California Hazardous soil from a project site in Sacramento to Clean Harbors, Buttonwillow Landfill. Project Dates: May 2018 – September 2018

Eleven Engineering / Terra Pacific Group – Oroville, CA

Environmental remediation cleanup in Oroville resulted in over 12,000 tons of contaminated soil being generated and transported to both non-hazardous and hazardous waste landfills. BTI provided an on-site project manager to manage loads being off-hauled to landfill locations, manage manifests and be the point of contact for driver communication on-site. Our trucks passed multiple rigorous truck inspections throughout the project. Project Dates: April 2018-December 2018

Mountain Cascade – EBMUD North Interceptor Relief - Berkeley, CA

BTI has been contributing to the Mountain Cascade project since June 2018 by providing 8-10 trucks per day and hauling non-RCRA and non-hazardous contaminated soil. We utilized a local Class II landfill and a California Class I landfill for disposal. Project Dates: June 2018-January 2019

Eleven Engineering/ Ahtna – Concord, CA

BTI used our end dumps to remove RCRA/non-RCRA hazardous soil and non-hazardous soil. We also imported clean soil for backfill needs. Drivers needed to meet high security clearances and requirements. Eleven Engineering and Ahtna used BTI's services to haul around 30,000 tons of hazardous and non-hazardous waste to Keller Canyon and Buttonwillow from Concord, California. Project Dates: April of 2018 to July of 2018.

Waste Management – Moffett Field CA

For over six months, BTI provided twelve to twenty trucks per day for a remediation clean up at Moffett Field. Additionally, BTI provided a project manager on-site for truck and driver coordination on and off the base and at the project site. The project manager assisted the on-site construction group with maintaining a safe off-haul. Overall, 90,000 tons of non-hazardous and hazardous soil was transported in total. Project Dates: June 2019 – November 2018

Clean Harbors – Northern and Southern CA

BTI has worked on multiple projects with Clean Harbors and hauling hazardous soil to Buttonwillow Landfill in California and to Grassy Mountain Landfill in Utah. Project work includes Northrop Grumman Systems Corp in Sunnyvale, CA, BAE Systems in Hollister, CA and Rohr in Chula Vista, CA in 2018. The projects resulted in thousands of tons of soil safely off-hauled, dependable transportation by consistently providing ten to thirty trucks per day and utilizing BTI's aluminum and steel end dump trailers. Work continues in 2019 with the same jobs and new projects.

Pacific Gas & Electric (PG&E) – Dry Spoils and Import

BTI has a long term contract to provide PG&E with dry spoils transportation and disposal and import to multiple PG&E locations throughout Northern California. We provide on-site project managers for truck management and manifesting, up to 30 trucks per day, waste sampling and analysis, waste approval of non-hazardous spoils, analytical management in PG&E database and various types of PG&E approved import materials. Project Dates: January 2016 to current.

Pacific Gas & Electric (PG&E) – Wet Spoils Management

BTI has a long term contract to provide PG&E with wet spoils containment, transportation and disposal at multiple PG&E locations throughout Northern California. BTI has designed and manufactured specific equipment to assist PG&E with the waste generated from wet hydrovac work. New industry equipment includes the Mud Tank, Slide Top and Wash Bay. BTI provides mobile service crews that have mini-excavators and supporting equipment with them to service PG&E locations on a daily basis. Integral to the operations are the waste containers, such as 20CY bins, and specialty transportation roll-off, rocket launchers and vacuum trailers. Wet spoils

management is a daily operation with field crews and tractor trailers dispersed throughout Northern California. Additionally, BTI performs waste sampling and analysis, waste approval of non-hazardous spoils and analytical management in PG&E database. Project Dates: December 2014 to current.

Hollywood Park, Inglewood CA

BTI transported six hundred thousand tons of non-hazardous and hazardous soils associated with the Hollywood Park, new NFL stadium build project in the Los Angeles area. The off-haul portion of the project started in August 2016. BTI managed all aspects of transportation at the site. In September 2016 alone, BTI hauled over 60,000 tons of soil. Inglewood, CA. Project Dates: August 2016 through June 2017.

SWEPI LP, Goleta CA

Working with Waste Management, BTI transported non-hazardous and hazardous soils from the Shell Oil location in Goleta, California. Under stringent site requirements, personnel training and traffic management plans, BTI's on-site project manager managed the transportation of more than 30,000 tons of contaminated soils. Project Dates: May 2016-December 2016.

Genentech Inc, South San Francisco CA

Working with Clean Harbors, BTI transported non-hazardous and hazardous soils from the Genentech location in South San Francisco, California. BTI provided end dump trucks, rocket launchers for bin transportation, 20 CY Bins and on-site personnel for equipment, loading, manifesting and driver management. This is an on-going job that has transported over 5,000 tons to date. Project Dates: August 2016 to December 2018.

EQM / US EPA Sonoma County Fire Cleanup Project

BTI assisted with cleanup efforts of the Sonoma County area after the October 2017 Fire Storms. One result of the fires was the need for remediation of hazardous asbestos debris. Using many 20CY bins, rocket launchers and roll-off trucks, BTI safely shipped over 200 bin loads of hazardous debris. Project Dates: Dec 2017 through Feb 2018

Arcadis – Hunters Point Naval Shipyard, San Francisco, CA

Over the past six years, BTI has provided end dump transportation for non-hazardous soil, debris, California hazardous soil, RCRA soils from the Hunters Point Naval Shipyard to regional Class II landfills and California State Hazardous Landfills. We have safely off-hauled over 200,000 tons of material and completed 8,000 truckloads. We provide project managers for truck management and on-site specific requirements for truck decon and RAD detectors. Project Dates: November 2013 - Current

Caltrans Doyle Drive Extension Project

Non-hazardous and hazardous soil has been managed from the Caltrans Doyle Drive Extension Project in San Francisco. The project started in the winter of 2013 and has needed waste evaluation, waste approval profile, transportation and disposal support throughout the past four years. BTI has managed nearly 300,000 tons of non-hazardous and hazardous soil safely to landfills. San Francisco, CA. April 2013 to current.

West County Wastewater District, Richmond

On-site operations consisted of excavation of sludge from ponds, windrowing and turning of sludge stockpile to dewater the waste (D6 LGP), loading of end dumps with Cat 330 Excavator, transportation and disposal of non-hazardous waste. BTI provided all equipment and operators to perform work. Over 60,000 tons of sludge have been dewatered and hauled for disposal. Summer months 2011 through 2019.

Dry Suction Excavation – Dino Projects

Dino – Arvin, CA

Working within a valve yard, BTI's Dino dry suction excavation unit, has safely excavated over 350 CY of dry soil in an excavation that ranges up to seventeen feet below ground surface. The dry soil is unloaded at the project site for reuse. The reuse of soil on-site has saved the project thousands of dollars by eliminating the need and associated costs for import material and trucking. Project conditions allow for production rates of 40-70 CY of soil excavated per day. Project Dates: February 2018 – December 2018

Dino – Paradise, CA

Using dry suction excavation, BTI assisted in the Paradise restoration efforts. BTI completed multiple services per day at multiple excavation locations per day utilizing all of units, seven days a week. Dry spoils from excavation were unloaded at a staging yard for future reuse. Project Dates: December 2018 – January 2019

Ferma Corp and Waste Management – Oakland, CA

Using our Dino unit, BTI assisted Ferma Corporation and Waste Management in Oakland, California to suction clean an abandoned storm water culvert and drain. Since the Dino can suction dry material, wet material and large pieces of debris, it was able to reach and remove all material that was encountered. The unit unloaded directly into 20CY bins which were hauled to landfills for disposal. Additionally end dumps and vacuum trailers were used to transport and dispose of the liquid. Approximately 7,100 tons of non-hazardous and 4,140 RCRA hazardous soil and water was hauled, in about 300 loads. The sited many of our pieces of equipment including phase separators and 10k mini tanks. Project Dates: October 2018 – December 2018

Dino- Machado & Sons Construction – Santa Clara

Using up to 80 ft of laydown hose, BTI is productively excavating in tight site conditions. Because of the dual fan technology, the Dino does not lose suction with additional hose attached and successfully adapts to the project site conditions. Excavated soil remains on-site for reuse which save the project money by eliminating the need and costs associated with excavated soil disposal, backfill material and trucking. Project Dates: June 2019

Dino- Republic Services – Pittsburg, CA

The Dino cleaned out and cleared a flow canal and piping at a landfill. We safely removed built-up material with no damage to the existing facilities which was a critical factor during this project. Previous removal methods would have taken multiple days to complete and the Dino completed the work within one day. Project Dates: June 2019

Dino – Morro Bay, CA

Using our Dino, dry suction excavation unit, BTI worked on gas transmission lines excavating bell holes of depths of nine feet below ground surface. We excavated approximately 50 CY of soil per day and generated over 400 CY. The dry spoils were unloaded directly onto the project site and reused at the project site. Project Dates: November - December 2017

Dino – Bakersfield, CA

An Adelaide pipe replacement project has our Dino dry suction excavation unit working in residential areas in Bakersfield, CA. Work consists of excavating bell holes and prospect holes and working in conjunction with the public utility personnel. The dry soil at this project is dumped directly into a staged 20CY bin for controlled off-haul from the neighborhoods. Project Dates: October 2017 – December 2018

Awards

Pacific Gas & Electric awarded BTI
2016 PG&E Gas Operations Supplier of the Year

AMEC Earth and Environmental, Inc awarded BTI
Small Business Subcontract Vendor of the Year 2010

Certifications

Woman & Minority Owned Business WMBE

Certified Woman and Minority Owned Business -WMBE
California Public Utilities Commission (PUC)/Supplier Clearinghouse
Certification number 9DN000071

Certified Woman Owned Business -WBE
Woman's Business Enterprise National Council (WBENC)

Certified Woman Owned Small Business -WOSB
Woman's Business Enterprise National Council (WBENC)

Certified Minority Business Enterprise - MBE
National Minority Supplier Development Council (NMSDC)

Licenses and Permits

Contractor License

General Engineering Class A and Hazardous Substances-964166

Transportation

BTI is a fully licensed and permitted waste and hazardous waste transportation company.

CHP Hazardous Material Transportation License,
DTSC Hazardous Waste Transporter Registration,
Uniform Program Credentials,
PHMSA Hazardous Materials Certificate,
Motor Carrier Permit, US DOT, UCR, CARB

Health and Safety

BTI is committed to protecting the health and safety of each employee as the overriding priority of the organization. Our commitment to our employees, translates to our work environments, job sites and all personnel we interact with on a daily basis.

Safety is our first priority each day and BTI has operated safely, with no incidents, at all of our client sites. We also require our business partners to maintain all permits and licenses in good standing and to implement required safety programs.

Key Safety Features:

- Training and education of our employees
- Daily Health and Safety meetings and work evaluations
- Management and employee involvement
- Evaluation and correction of unsafe conditions
- Open communication
- Near Miss and Incident Investigation and findings used as educational tools
- PPE Use and Requirements
- Equipment inspections and maintenance
- Use of a "2-Minute Safety Stand Down", in which any employee can remove themselves and others from a situation that doesn't appear safe OR stop work to call others for input and assistance in evaluating an issue.
- Meet all Federal and State regulatory requirements.

Health and Safety Certifications

ISNetworld Certified, Contractor Qualification, Since 2015

Gold Shovel Certified, Since 2015

Avetta (PICs) Certified

ITS Certified, Operator Qualified Excavation

Veriforce Certified, Operator Qualified Excavation

Safety Statistics

Year	2016	2017	2018
TRIR	0	0	1.2
DART	0	0	0
EMR	0.76	0.99	0.97

Locations

Corporate Office

402 Hartz Ave, Building C
Danville, CA 94526
925-229-2900 Phone
925-553-2616 Fax

Southern California Office

3272 Greyhawk Court
Carlsbad, CA 92010
760-642-2712 Phone
707-317-0076 Fax

Maintenance Yard

5781 Preston Ave
Livermore, CA 94551

Insurance

BTI carries comprehensive insurance. We can provide additional insured statements for specific projects. BTI has a \$10 million umbrella policy in addition to our \$1 million of general liability, \$1 million of contractor pollution, \$1 million automobile liability and \$1 million of workers compensation coverage.

Leadership & Key Personnel

The cumulative background of our environmental management team represents decades of experience in the fields of environmental management, landfill operations and development, disposal, construction, transportation, equipment rental and hazardous and non-hazardous waste. Our primary objective is to provide our clients with superior cost-effective service regardless of the scope or size of the project.

Sharon Bonner-CEO and President

sbonner@btienvironmental.com

Sharon Bonner is CEO and President of Bradley Tanks, Inc. She started the company in 1999 and is 100% owner. She has grown the tank rental services from one tank to over 350 tanks and has developed long term rental agreements throughout the United States. She has thirty years of business development and sales experience. Sharon is responsible for the development and application of corporate certifications, policies, contracts, negotiations, finances and employee management.

Sharon's work experience includes advertising, sales, business development and marketing for business growth, client services, and long-term customer relations.

Education: BS in Organizational Behavior from University of San Francisco
 AA in Business Administration from Ohlone College

Brad Bonner-Business Development Director

bbonner@btienvironmental.com

Brad Bonner is the Business Development Director for Bradley Tanks, Inc. Brad has 33 years of experience in the environmental, construction, hazardous waste and landfill industries. Brad's work in sales and marketing has gained his clients competitive rates and broader visibility in their fields. Utilizing BTI services, he has coordinated small and large waste projects utilizing various forms of transportation and negotiated large project contracts.

Brad's work experience covers project management, field work, sales, marketing, customer relations, regulatory compliance, waste characterization and profiling, and management of office, project-site and sales staff. He successfully led the West Region of Allied Waste Special Waste with 20 landfills, 15 employees and a \$87 million budget. Over the past 25 years, Brad has worked for Allied Waste, US Ecology, Betz Laboratories and Calgon Corporation.

Education: BA in Business from the University of Portland

Certification: OSHA 40 Hour HAZWOPER

Norm Christensen-Chief Financial Officer

nchristensen@btienvironmental.com

Norm Christensen works with Bradley Tanks, Inc as the Chief Financial Officer and Responsible Managing Employee (RME). Norm works directly with our insurance group for compliance, supports the CEO in financial planning and advises on accounts payable and receivables. Norm is also a lead contact with our equipment manufacturers, a key contact with landfills and provides on-site project management as the RME.

Norm's work experience covers market and operations planning, operations, environmental systems, construction, regulatory compliance and leadership of over 775 employees, 12 business units and \$275 million in annual revenue. He has been able to bring large corporate best management practices and instill them with BTI, thereby benefiting our clients on many levels.

Over the past 33 years, Norm has worked for General Dynamics, Offset Fuels, Pima Gro, BFI and Allied Waste.

Education: BS in Business Administration/Finance from California State University Fresno

Certification: Contractors License-RME & OSHA 40 Hour HAZWOPER

Kelly Graser-Director of Compliance

kgraser@btienvironmental.com

Kelly Graser is working with Bradley Tanks, Inc as a Director of Compliance. She has over 20 years of experience in the environmental, construction, contaminated waste and landfill industries. She worked for BFI/Allied Waste for 8 years prior to contracting for special projects starting in 2003. Her work experience is in regulatory compliance, technical analytical review, site characterization, landfill waste acceptance, disposal sales and technical writing.

For BTI, Kelly lends her experience in regulatory compliance and analytical review to initial site reviews of complex projects, manages all waste profiling, coordinates permits and licenses for company operations and assists with proposal technical writing. She also directs the company in specialty invoicing, Health and Safety and Human Resources and Marketing.

Education: MS in Environmental Science from Baylor University
BS in Natural Resources from University of California Berkeley
Certification: 40-Hour USACE EM 385-1-1 Certified
OSHA 30 Hour Construction Safety and Health
40-Hour Hazwoper Certified

Jessica Carr-Director of Transportation

jcarr@btienvironmental.com

Jessica Carr currently holds the position of Director of Transportation & Logistics. She is responsible for the direction of over 80 drivers on a daily basis, driver management, equipment management, truck permits and driver compliance, project estimating for trucks and tanks and on-site field coordination and support. She controls bi-weekly driver payroll & subhaul. Overseas all company invoicing and certified payroll. Jessica is the lead of the Carlsbad office.

Jessicas' work experience covers estimating, accounts receivable, billing, project management, field work, sales and marketing, client services, customer relations and waste characterization and profiling. She worked for Denbeste Transportation for 6 years before joining BTI.

Education: 2 years at Santa Rosa Junior College towards Business Major
Bilingual in Spanish and English- 14 years of Spanish education at Cali Calmecac Immersion School.
Certification: OSHA 40 Hour HAZWOPER

Adam Carr-Director of Operations

acarr@btienvironmental.com

Adam Carr is BTI's Director of Operations. He is responsible for on-site work for BTI including truck management, field personnel supervision and health and safety. Adam and his group are BTI's on-site representative to ensure projects are managed smoothly, efficiently and safely. He currently manages BTI's large contracts for on-site field services and driver field support. He orchestrates daily operations and ER operations. Adam also directs the company in equipment maintenance and repairs for a fleet of over 30 tractors and 90 trailers and over 300 tanks.

Adam has worked in construction, on project sites and in transportation for over 12 years. He has experience with all types of equipment, environmental field applications, problem solves, conducts tailgate meetings and has the strong ability to direct and manage BTI field personnel and drivers. He worked for Denbeste Transportation for 6 years before joining BTI.

Education: First Responder and Emergency Medical Technician Programs, Santa Rosa Junior College

Certification: OSHA 40 Hour HAZWOPER, Confined Space Certified, CPR/First Aid Certified, Operator Qualified Excavation

Additional Personnel**Joe Griffith****Technical Compliance Manager**

jgriffith@btienvironmental.com

Scott Fletcher**Account Manager**

sfletcher@btienvironmental.com

Dave Allen**Operations and Compliance Supervisor**

dallen@btienvironmental.com

Jesse Radebaugh**Health and Safety Manager**

jradebaugh@btienvironmental.com

21k Frac Tank



21k Frac Tank



End Dump Tractor Trailer Fleet



Self Tarping Vantage End Dumps and 2011 Tractor



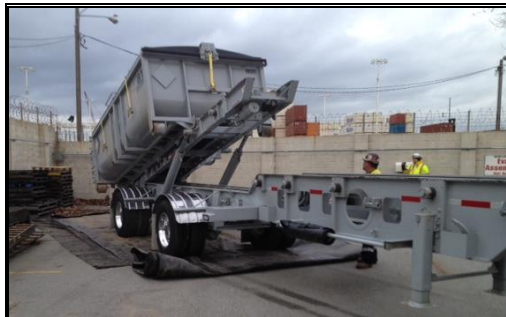
120bbl/5,000 Gallon Vacuum Trailer



10-Wheeler/Transfer



Rocket Launcher



20 CY Bin

