



# BTI

Bradley Tanks, Inc.



STATE OF CALIFORNIA  
HILLS  
IN MA

# Statement of Qualifications

3/8" THK 23  
MS DM BLUE

2024

## NORTHERN CALIFORNIA

402 Hartz Avenue, Building C  
Danville, CA 94526  
p: 925-229-2900

## SOUTHERN CALIFORNIA

3272 Greyhawk Ct.  
Carlsbad, CA 92010  
p: 760-642-2712





**Bradley Tanks, Inc**  
**402 Hartz Avenue, Building C**  
**Danville, CA 94526**  
**925-229-2900**  
**[www.btienvironmental.com](http://www.btienvironmental.com)**

## **EXECUTIVE SUMMARY**

Bradley Tanks, Inc (BTI) specializes in transportation, equipment rental, and excavation services in the fields of environmental remediation, construction, and underground utilities. BTI is a certified woman, minority business enterprise and recognized as a small business operation.

The cornerstone of BTI is frac tank rentals, which has remained as a core business unit since its beginning in 1999. Over the past twenty-five years, BTI has grown its frac tank inventory to over 450 tanks with various sizes and types of tanks available. Tanks are deployed throughout the contiguous United States, Alaska, Hawaii, and Guam.

Transportation and disposal services are supported by our fleet of tractors and trailers hauling non-hazardous and hazardous wastes, both solid and liquid materials. BTI has aluminum end dump trailers, steel end dump trailers, rocket launchers, and vacuum trailers. In the past fourteen years, we have become one of the largest hazardous waste transporters in California.

Excavation activities are performed using our dry vacuum trucks (Dinos), hydrovacs, and XR2 vacuum excavator. These pieces of equipment offer faster, safer excavation methods at project sites that are eco-friendly and cost effective.

BTI has always looked to the future for new opportunities, new approaches to projects, and new equipment designs. This forward thinking has allowed us to stay ahead of environmental service needs. BTI has invested, designed, and manufactured a number of pieces of equipment new to the environmental industry and useful to many clients.

BTI is a team of professionals with multiple years of experience who use best management practices from finance, transportation, operations, safety and waste regulations learned and developed throughout their careers. Our management team works with clients throughout project planning and execution. BTI will work to ensure that all our operations are conducted safely, production goals are achieved, and we provide high quality equipment, personnel, and services.

The pairing of quality, innovative equipment, and our professional team has allowed BTI to be successful and to continually pursue specialty equipment and new concepts for our industry.

## **BTI Successes**

- BTI was awarded the 2016 Pacific Gas & Electric Gas Operations Supplier of the Year. With over 1,000 nominated companies, BTI is extremely proud of this recognition of our hard work, innovation, cost cutting evaluations, and dedication to meeting our clients' needs and goals.
- One Million Tons! BTI shipped over one million tons of contaminated soil from our project site at Camp Pendleton. The remediation project at Camp Pendleton SMEAF generated both non-hazardous and hazardous soils and BTI managed all 40,000 truckloads with no incidents.
- BTI stays in the forefront of innovation bringing new designs, concepts, and equipment to the industry. BTI has Mud Tanks, SlideTop Bins, Wash Bays, Dry Suction Excavation Trucks, and XR2 Hydrovac trucks that are leading the industry in how material is removed and stored.
- BTI's Dino, a high powered dry, suction excavation unit, can safely remove soil surrounding underground utilities. The resulting spoils from excavation are dry and can be immediately reused or directly unloaded into a 20 CY bin on location.
- BTI owns and operates the first XR2 vacuum excavator. The XR2 vacuum excavator is equipped with a shaker deck that separates liquids and solids to allow BTI field personnel to stay on the jobsite longer, work efficiently, and reduce disposal expenses.
- BTI successfully applies our knowledge of landfill waste acceptance permits to waste lab results and presents new, alternative disposal options to clients that are cost-effective and efficient.
- We have current licenses and permits to transport non-hazardous, California hazardous/non-RCRA hazardous, RCRA hazardous, and PCB hazardous wastes.
- BTI successfully passes the rigorous California transporter BIT inspections each time.
- We have an extensive and diverse fleet of transportation equipment and containers.
- BTI invests in new, quality equipment that passes 3<sup>rd</sup> party inspections, contributes to NOx and PM reduction requirements through CARB compliance.
- BTI has supported our clients with the specialized permits and ability to haul wastes out of state from California to Oregon, Utah, Arizona, Nevada, Texas, and Idaho.
- BTI has a clean safety record with no incidents at any project sites.
- Our Health and Safety program, DOT program and Personnel training and certifications continually meet and exceed our clients' audits requirements.
- As a certified Woman, Minority Owned Company, we help our clients meet contract diversity goals.

***We are dedicated to understanding your unique environmental requirements and combining the best solutions with a highly trained and knowledgeable management team for a successful, safe project.***

# **BTI Capabilities and Services**

## **Equipment**

In addition to our transportation fleet and containers, BTI has a large inventory of tanks. We have over 450 frac tanks.

### Tank Types:

21K Closed Tops 21K Open Tops 18K Open Tops 10K Closed and Open Tops 8.4K Closed and Open Tops	16K Double Wall Tanks 10K Double Wall Tanks 6K Poly Tanks 17.8 K Weir Tanks 7.3K Weir Tanks	10K Mud Tanks 6K Mud Tanks 3K Mud Tanks 20K Mix Tanks
--	---	--

**21k Frac Tank**



**21k Frac Tank**



Applications: Liquid containment solutions in environmental and industrial applications for the storage of hazardous and non-hazardous liquids and semi-solids. The tanks are used to maintain storm water runoff, contain liquids during dewatering efforts, in wastewater treatment systems, in oil production fields and as general storage.

Special Features: BTI tanks are coated with Phenoline 310 epoxy, have contoured full drain bottoms, smooth walls with no internal bracing for easy cleaning, and are equipped with multiple valves (front and rear), liquid level gauges, manifolds (interior or exterior), and OSHA approved integrated stairways with larger walkways and platforms.

### Containers / Equipment Available:

20CY Bins 40CY Bins 25CY Vac Boxes Wash Bay	Low Pro Bins Slide Top Bins Phase Separators Roll-off Ramps
--	--



## 20 CY Bins



Equipment Spec Sheets: Additional equipment details are noted on our equipment specification sheets including strapping charts and are available upon request.

## Mud Tanks

With the environmental need to contain hydrovac wet spoils in a controlled and above ground system, BTI designed and manufactured the mud tank. Using our industry knowledge, manufacturing connections and financing, BTI worked to solve our clients' needs with this piece of equipment. Hydrovac trucks produce wet spoils which are a difficult to manage by-product of the operation. The mud tank has the capacity to hold multiple hydrovac loads. The rugged structure withstands heavy usage and yellow iron can excavate out dried solids without compromising the waste containment structure. This equipment is used by multiple California utilities and by private clients needing containment of semi-solid / slurry waste.

## BTI Mud Tanks



## Transportation

BTI is a fully permitted and licensed hazardous and non-hazardous waste transporter with a large fleet of tractors and trailers that are operated by highly skilled and trained employees.

### Trailer Types:

Aluminum End Dumps Steel Rock Trailers 120 BBL Vacuum Trailers 130 BBL Vacuum Trailers	Rocket Launchers Roll Off Trucks Transfer Trucks	Walking Floor Trailers High Side Trailers
---	--	--

**End Dump Tractor Trailer Fleet**



**Self Tarping Vantage End Dump and Tractor**



**120bbl/5,000 Gallon Vacuum Trailer**



**Rocket Launcher**



BTI equipment is designed to maximize performance and safety:

Auto Tarps: All BTI equipment is self-tarping. The auto tarp is a fast, efficient and safe opportunity to cover the waste load for shipping and is operated from inside the tractor unit.

Gauges: All BTI tractors have on-board gauges. BTI drivers can evaluate the weight of the load while at a project site. This specialty feature allows all loads to be maximized.

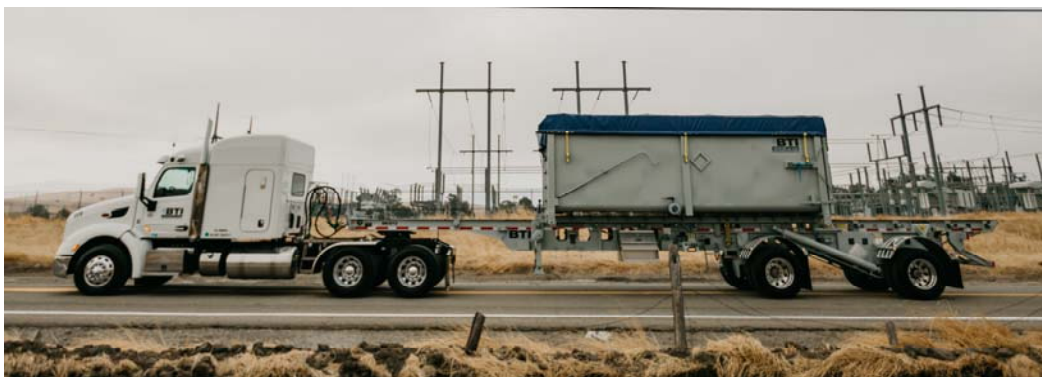
CARB Compliant: BTI tractors are CARB compliant which contribute to low NOx and PM emissions. BTI is looking forward to complying with California EV tractor requirements.



End Dump Trailers: BTI end dump trailers are top of the line Vantage Aluminum, 38 feet long, Teflon coated, have gasketed sealed gates, and are equipped with automatic tarps. All of the end dumps are the lightest weight and most durable in the market allowing more tons per load.



Rocket Launchers & Bins: BTI rocket launchers can haul 20 CY and 40 CY bins.



Vacuum Trailers: BTI has both stainless steel and carbon steel vacuum trailers allowing BTI to accommodate many different types of liquid transportation needs. The vacuum trailers are 120 bbl (5,000 gallon) and 130 bbl (5,460 gallons).



BTI Safe Transportation Program. Our program specifies that all tractors and trailers go through a mandatory Level 1 CHP inspection along with a weekly equipment review by the BTI Project Manager. BTI has a truck pre-inspection program and check list that is used on projects. Prior to loading, trucks are inspected for safety and any other equipment issues.

Equipment and Operator Permits: Our equipment is licensed and permitted to haul non-hazardous contaminated wastes, non-RCRA/California hazardous waste, RCRA hazardous waste, and PCB waste in California and out of state. BTI drivers are licensed, HAZWOPER certified, and trained in DOT and OSHA mandatory issues pertaining to waste hauling, hazardous waste hauling, and out of state hauling. Our drivers carry permit binders, emergency action plans, and PPE including fire suits and respirators.

Equipment Spec Sheets: Additional equipment details are noted on our equipment specification sheets which are available upon request.

## **Excavation**

### **DINO – DRY Suction Excavation**



Seven years ago, BTI introduced the first of its kind, an innovative excavation technology, the Dino, to the United States. BTI invested in this technology in order to offer a new, environmentally relevant, productive solution to the field of excavation when working around critical underground utilities.

The Dino's high suction powered truck expertly lifts away ground, with little risk of damage to existing facilities or personal injury. The Dino operates using two powerful fans that generate 24,000 CFM for excavation, uses a 20' articulated excavator style boom with a 10" suction hose, air lance and can hold up to 10 yards of DRY REUSEABLE material. It executes precision excavation with complete control using the remote controlled power arm/boom. The

resulting excavated spoils are dry and can be unloaded at the project site either on the ground for reuse or directly into a 20CY bin for containment.



The Dino next to a stockpile of soil that it excavated. Excavated soil will be reused on-site.



Dino unloading into stockpile on site.



Dino unloading into a 20CY bin.

#### MEDIA

- BTI Dino unit Video: <https://vimeo.com/247087582>
- MBE MAGAZINE: PG&E submitted an article to the MBE Magazine in 2018 featuring BTI and the Dino / Dry Suction Excavation units. [PG&E Diverse Suppliers Innovate for Cost Savings and Environmental Sustainability](#). A copy is available upon request.

Equipment specification sheet and Dino Detailed Evaluation on Projects is available.



## HYDROVACS – WET Suction Excavation



Providing a reliable and effective way to excavate, BTI's hydrovacs are designed to handle the toughest and most challenging excavating jobs with ease. Utilizing high-pressure water to cut through soil while vacuuming the excess dirt from the area, the benefits of using a BTI hydrovac at a project jobsite will help to improve safety and efficiency at the jobsite and reduce costs.

## XR2 – Vacuum Excavator



The XR2 vacuum excavator was proudly added to BTI's fleet of equipment in 2023. The XR2 vacuum excavator is equipped with a shaker deck that separates liquids and solids to allow BTI field personnel to stay on the jobsite longer, work efficiently, and reduce disposal expenses.

Material excavated with the XR2 is fed through an onboard deceleration tank that exits through an airlock onto a shaker deck where solids and liquids are then separated. The solid material is moved by conveyor toward the rear of the machine where it is discharged and can be carried away or left on the jobsite, depending on the material. Used, slurry water is pumped into the fluid storage tanks for disposal.

## **Project Services**

### **Construction Management & Environmental Remediation**

BTI has a team of professionals who participate in our projects with the goal of a successful and safe off-haul of contaminated wastes. Our investment in the project starts with the technical review of the analytical data and carries through to the on-site operations of our project managers and drivers.

Waste Characterization, Analytical Review, and Waste Profiling: BTI is able to review and technically advise on sites with multiple analytical investigations, in-situ and stockpile data, and provide constructive feedback and options for landfill waste disposal approval. Project sites perform analytical for different purposes which do not necessarily correlate to landfill disposal characterization. BTI can technically analyze existing analytical data, obtain third party sampling, provide disposal options and solutions, complete profiles, and package the waste information so that it can be granted disposal approval at a landfill. After working at landfills for over 15 years, our personnel utilize their regulatory expertise and understanding of landfill permits to benefit our clients. We provide cost savings by uncovering new disposal options, eliminating double handling of waste on-site, the need for additional testing, and minimizing hazardous wastes on-site.

Field Personnel – Project Managers and Equipment Operators: In the field, our team of project managers direct a number of daily items including: on-site and off-site truck routes, daily communication with drivers of the site rules, safety requirements and changes, provide truck control, provide daily reports, regularly conduct thorough equipment inspections, and are our on-site direct communication with the client. Our project managers participate in the health and safety meetings and communicate those items to our drivers thereby providing project continuity and raising safety awareness. BTIs' project managers are also trained to collect, preserve, and transport to the laboratory representative soil samples from bunkers, stockpiles, borings, test pits, and bins. Our qualified equipment operators provide on-site project support and are proficient with mini-excavators, backhoes, front end loaders, compressors, and water buffalos. All of BTIs' project managers and equipment operators are 40 Hour Hazwoper trained and Traffic Control certified.

Transportation Services: In addition to the services provided by our Project Managers, BTI personnel often assists with portable scales with operator, gauge readers, truck loading, truck decon, and truck tarp racking. On all of our projects, we assist with waste evaluation, waste profiling, landfill approval, landfill scheduling, and disposal options.

Manifests & Disposal Paperwork: BTI manages the transportation paperwork. We provide pre-printed manifests and our project managers can assist with truck manifesting. Each month, BTI will provide all copies of manifests and landfill scale tags, both original copies and scanned copies. We provide up to date summary tonnage reports multiple times per week for real time project tracking.

## **Projects & Clients**

BTI has worked on many projects providing on-site services, loading, and transportation and disposal for non-hazardous and hazardous soil, liquids and debris. Underground utility and excavation projects highlight the dry and wet suction excavation equipment that is performed safely and efficiently. Construction projects range from material movement on-site grading, and bunker builds. Our project scopes vary as we met the needs and requests of our clients.

***Safety is our first priority at all project sites and BTI has operated safely, with no incidents, at all of our project sites.***

### Butts Canyon Road, Middletown, California

Sampling activities conducted by BTI within the proposed utility trench along Butts Canyon Road identified the presence of Non-RCRA hazardous soil with non-hazardous non-friable asbestos containing material (ACM) and non-hazardous soil with non-hazardous non-friable ACM. BTI managed the profile application and approvals for the offsite disposal of the material.

Various pieces of equipment were provided by BTI to support the field operations at the project site. Mud tanks were used to provide above ground containment of drill mud and hydrovac spoils as the waste was generated; vacuum tankers and rocket launchers with 20 CY bins were used for transporting wet wastes to the landfills; and end dumps were used to transport dry wastes to the landfills. Approximately 1,000 tons of non-RCRA wet and dry waste and over 900 tons of non-hazardous wet and dry waste were safely transported to the landfills from the project site. Effective communication between the Client's field crew and BTI's on-site personnel allowed the processing of wet and dry spoils that were generated from the drilling/trenching activities to be handled and disposed in an efficient manner that ensured the protection of public health, safety, and the environment. Project Dates: August 2023 through October 2023.

### CAPE Environmental – Marine Corps Air Station Miramar, San Diego, California

Former onsite activities conducted at the project site impacted the soil at various locations with metals, PNAs, PCBs, and dioxin. BTI's review of the analytical data that was collected from the project site indicated that the soil being excavated at the project site consisted of non-hazardous material, Class I Non-RCRA material, and TSCA material. Disposal options were

provided to the Client by BTI, which eliminated double handling of the material on-site and the need for additional testing. Waste profiles were completed by BTI, and the packaged waste information that was submitted was processed by the landfills in a timely fashion for approval. Project support consisted of landfill scheduling, on-site truck processing (including manifesting, equipment inspections, and gauge reading), and transportation and disposal. To date, BTI has off-hauled approximately 130,000 tons of soil off the project site, safely. At the peak of the project, BTI was managing the off haul of 50 trucks a day. With BTI's diverse fleet of trucks and trailers, BTI was able to handle this large volume of waste for disposal. Project Dates: 2019 to current.

#### Underground Construction - Oroville, California

BTI provided rental of 20 CY bins, berms, and a steel ramp for multiple large directional drilling projects conducted by Underground Construction in Oroville. BTI also provided sampling service, analytical review, and waste profiling throughout the project. BTI transported and disposed of more than 1,500 tons of drill mud throughout the duration of the project. Vacuum tankers and roll-off trucks were used to service the project to keep it on schedule. Project Dates: June 2023 through November 2023.

#### Santa Clara Valley Water District

BTI provided transportation and disposal services to Santa Clara Valley Water District (SCVWD) and water treatment solids generated at three treatment facilities in Santa Clara County. BTI provided end dump trailers stationed at the treatment facility for direct loading of the waste and we provided end dumps for backhoe loading on a weekly basis. This was a weekly service project. Project Dates: June 2015 to June 2023.

#### USMC MCB Camp Pendleton Stuart Mesa East Agricultural Field – One Million Tons

BTI hit a mile stone in 2017 by reaching a project total one million tons hauled from the same project site. One million tons equated to 40,000 loads hauled off the project site, safely. Our success on this project started with understanding local landfill permits which allowed us to provide two disposal locations and use regulatory waste approval techniques to minimize hazardous waste on-site; thus saving the base millions of dollars in transportation and disposal.

- Project work spanned 2010, 2011, 2012, 2013, 2014, 2017 and 2018
- At the peak of the project, BTI was processing 300 truckloads per day.
- Project consisted of contaminated non-hazardous soils and hazardous soils
- Project support consisted of on-site truck processing (including manifesting, equipment inspections, gauge reading, tarp racks) and transportation and disposal

#### Innovative Construction Solutions – Dublin, CA

BTI worked with Innovative Construction Solutions hauling 41,325 tons of contaminated soil. We utilized our aluminum end dumps with auto tarps and hauled the material to Clean Harbors

Buttonwillow Landfill. Approximately 45 to 55 trucks per day was provided by BTI to complete the project. Project Dates: July 2020 – September 2020

#### Caltrans – Northern and Southern, CA

BTI has proudly assisted Caltrans on multiple projects safely hauling soil and treated wood waste. Projects performed by BTI included day time and night time transportation with on-site project management. BTI hauled ADL soil using aluminum end dump trailers and rock trailers, and hauled 20 and 40 CY bins of treated wood waste with rocket launchers. Project Dates: 2023

#### Terra Pacific Group – Former Potrero MGP Site – San Francisco, CA

As part of an environmental remediation dredge project, BTI transported over 5,000 tons of hazardous sediment and over 10,000 tons of non-hazardous sediment that was dredged from the bay and dried out. BTI managed the profile application and approvals for the offsite disposal of the sediment and provided an on-site project manager to oversee loads being off-hauled to landfill locations, manage manifests, and be the point of contact for driver communication on-site. Our trucks passed multiple rigorous truck inspections throughout the project. Project Dates: 2019

#### Mountain Cascade – EBMUD North Interceptor Relief - Berkeley, CA

BTI contributed to the Mountain Cascade project by providing 8 to 10 trucks per day and hauling non-RCRA and non-hazardous soil. We utilized a local Class II landfill and a California Class I landfill for the disposal. Project Dates: June 2018 through January 2019

#### Clean Harbors – Northern and Southern CA

BTI has worked on multiple projects with Clean Harbors since 2020 hauling hazardous soil to Buttonwillow Landfill in California and to Grassy Mountain Landfill in Utah. Project work include Chevron in El Segundo, Georgia Pacific in San Leandro, SMUD in Sacramento, USS Posco in Pittsburg, and UCSF in San Francisco. Providing multiple end dumps per day and utilizing BTI's aluminum and steel end dump trailers for these projects have resulted in thousands of tons of soil safely off-hauled to the landfills.

#### Pacific Gas & Electric (PG&E) – Dry Spoils and Import

BTI has a long term contract to provide PG&E with dry spoils transportation and disposal and import to multiple PG&E locations throughout Northern California. We provide on-site project managers for truck management and manifesting, up to 30 trucks per day, waste sampling and analysis, waste approval of non-hazardous spoils, analytical management in PG&E database and various types of PG&E approved import materials. Project Dates: January 2016 to current.



### Pacific Gas & Electric (PG&E) – Wet Spoils Management

BTI has a long term contract to provide PG&E with wet spoils containment, transportation and disposal at multiple PG&E locations throughout Northern California. BTI has designed and manufactured specific equipment to assist PG&E with the waste generated from wet hydrovac work. New industry equipment includes the Mud Tank, Slide Top, and Wash Bay. BTI provides mobile service crews that have mini-excavators and supporting equipment with them to service PG&E locations on a daily basis. Integral to the operations are the waste containers, such as 20 CY bins, and specialty transportation roll-off, rocket launchers and vacuum trailers. Wet spoils management is a daily operation with field crews and tractor trailers dispersed throughout Northern California. Additionally, BTI performs waste sampling and analysis, waste approval of non-hazardous spoils and analytical management in PG&E database. Project Dates: December 2014 to current.

### Hollywood Park, Inglewood CA

BTI transported six hundred thousand tons of non-hazardous and hazardous soils associated with the Hollywood Park NFL stadium build project in the Los Angeles area. The off-haul portion of the project started in August 2016. BTI managed all aspects of transportation at the site. In September 2016 alone, BTI hauled over 60,000 tons of soil. Project Dates: August 2016 through June 2017.

### Flatiron West Redlands Passenger Rail – Redlands, CA

In August of 2019, BTI provided waste profiling, transportation, and disposal for Flatiron West. We hauled 680 tons of Non RCRA soil and 56,500 tons of RCRA hazardous soil for stabilization. We used end dump trucks to safely haul the material from Redlands, California, to out of state US Ecology in Beatty, Nevada, as well as South Yuma County Landfill in Arizona. Projects dates: August 2019 through September 2020.

### Caltrans Doyle Drive Extension Project

Non-hazardous and hazardous soil was managed from the Caltrans Doyle Drive Extension Project in San Francisco. The project started in the winter of 2013 and needed waste evaluation, waste approval profiling, transportation, and disposal support throughout the entire project. BTI managed nearly 300,000 tons of non-hazardous and hazardous soil safely to landfills. San Francisco, CA. Project Dates: 2013 to 2019.

### West County Wastewater District, Richmond

On-site operations consisted of excavation of sludge from ponds, windrowing and turning of sludge stockpile to dewater the waste (D6 LGP), loading of end dumps with Cat 330 Excavator, transportation and disposal of non-hazardous waste. BTI provided all equipment and operators

to perform work. Over 136,000 tons of sludge have been dewatered and hauled for disposal. Summer months 2011 through 2023.

#### Terra Pacific Group – Salinas, CA

In July 2020, BTI worked on the PG&E Salinas Manufactured Gas Plant Remediation Project providing end dump transportation. We transported and disposed of over 11,000 tons of non-hazardous soil and debris as remediation waste. BTI had an on-site project manager for truck management and manifesting. Project Dates: July 2020 to November 2020.

#### C & D Contractors – Sacramento, CA

BTI worked on a Ravine project in Sacramento for C&D Contractors. We supported this project with a variety of our services from equipment rental, waste evaluation, transportation, and dry suction excavation. We provided a 21,000 gallon frac tank and 20 CY bins. The waste materials generated were transported using BTI's 120 bbl vacuum tankers and rocket launchers for bin transport. Our dry suction excavation unit, the Dino, was used for daylighting utilities on-site. BTI also provided waste sampling, analytical review and waste profiling. BTI helped our clients efficiently finish their projects by having a diverse range of equipment and services, all working cohesively and effectively to get the job done. Project Dates: July 2020 to October 2020.

#### Republic Services – Recyclables, MSW, Greenwaste

On a daily basis, BTI hauls materials in 48-foot walking floor trailers (that have a capacity of 128 CY per trailer) for Republic Services. Hauling 30 loads per day, recyclables are hauled from sites in Half Moon Bay, Sacramento, Fairfield, and Salinas to processing facilities in San Jose, Richmond, and Salinas. Project Dates: April 2018 to current.

### **Dry Suction Excavation – Dino Projects**

#### Arvin, CA

Working within a valve yard, BTI's Dino safely excavated over 350 CY of dry soil in an excavation that ranged up to seventeen feet below the existing ground surface. The dry soil was unloaded at the project site for reuse. The reuse of soil on-site saved the project thousands of dollars by eliminating the need and associated costs for import material and trucking. Project Dates: February 2018 – December 2018

#### Paradise, CA

Using dry suction excavation, BTI assisted in the Paradise restoration efforts. BTI completed multiple services per day at multiple excavation locations per day utilizing all of its Dino units, seven days a week. Dry spoils from the excavation activities were unloaded at a staging yard for future reuse. Project Dates: December 2018 – January 2019

### Ferma Corp and Waste Management – Oakland, CA

BTI assisted Ferma Corporation and Waste Management in Oakland, California to suction clean an abandoned storm water culvert and drain. With the capabilities to suction dry material, wet material, and large pieces of debris, the DINO was able to reach and remove all material that was encountered. The unit unloaded directly into 20 CY bins which were hauled to landfills for disposal. End dumps and vacuum trailers were used to transport and dispose of the material. Approximately 7,100 tons of non-hazardous and 4,140 RCRA hazardous soil and water were hauled in about 300 loads. Project Dates: October 2018 – December 2018

### Bakersfield, CA

An Adelaide pipe replacement project had our Dino dry suction excavation unit working in residential areas in Bakersfield, CA. Work consists of excavating bell holes and prospect holes and working in conjunction with the public utility personnel. The dry soil at this project was dumped directly into a staged 20 CY bin for controlled off-haul from the neighborhoods. Project Dates: October 2017 – December 2018

### Walnut Creek, CA

BTI used the Dino to suction up gravel that was imbedded in a molded plastic gravel stabilizer grid in Walnut Creek, CA. The Dino safely vacuumed the gravel from within the grid without damaging the existing landscaping and allowed the gravel to be reused or recycled. Project Dates: August 2019

## **Wet Suction Excavation – Hydrovac and XR2 Projects**

### Greenville, CA

Utilizing our hydrovacs, BTI assisted PG&E with the rebuild in Greenville, CA. Work performed by our hydrovacs consisted of safely daylighting for underground utilities, trenching for gas and electric services, and excavating three underground conduit boxes. Project Dates: July – November 2023.

### Front Street - Sacramento, CA

BTI provided excavation, transportation, and disposal services for the gas transmission line at Front Street in Sacramento, CA. Wet spoils that were produced from the excavation activities of our hydrovacs were placed in 20 CY bins for offsite disposal. A total of 1,000 tons were off hauled by BTI from the project site. Project Dates: March – May 2023

### Clearlake Oaks, CA

The XR2 was used by BTI to support the PG&E Gas for Electric Program with multiple underground installations and power pole replacements in rural areas of Clearlake Oaks, CA. Providing longer working hours due to its separating capabilities, the XR2 was ideal for the job.

The wet material that was being generated from the excavation activities was converted to dry spoils by the XR2 and the dry spoils were off hauled from the job site. Project Dates: March – May 2023

## **Certifications**

### Woman & Minority Owned Business WMBE

Certified Woman and Minority Owned Business -WMBE  
California Public Utilities Commission (PUC)/Supplier Clearinghouse  
Certification number 9DN000071

Certified Woman Owned Business -WBE  
Woman's Business Enterprise National Council (WBENC)

Certified Woman Owned Small Business -WOSB  
Woman's Business Enterprise National Council (WBENC)

Certified Minority Business Enterprise - MBE  
National Minority Supplier Development Council (NMSDC)

## **Awards**

Pacific Gas & Electric awarded BTI  
2016 PG&E Gas Operations Supplier of the Year

AMEC Earth and Environmental, Inc awarded BTI  
Small Business Subcontract Vendor of the Year 2010

## **Licenses and Permits**

### Contractor License

General Engineering Class A and Hazardous Substances-964166 (State of California)  
General Engineering Class A-0085057 (State of Nevada)

### Transportation

***BTI is a fully licensed and permitted waste and hazardous waste transportation company.***

CHP Hazardous Material Transportation License,  
DTSC Hazardous Waste Transporter Registration,  
Uniform Program Credentials,  
PHMSA Hazardous Materials Certificate,  
Motor Carrier Permit, US DOT, UCR, CARB



## Health and Safety

BTI is committed to protecting the health and safety of each employee as the overriding priority of the organization. Our commitment to our employees translates to our work environments, job sites, and all personnel we interact with on a daily basis. It is this commitment that ensures that the work performed by BTI is protective of public health, safety, and the environment.

Safety is our first priority each day and BTI has operated safely, with no incidents, at all of our client sites. We also require our business partners to maintain all permits and licenses in good standing and to implement required safety programs.

### Key Safety Features:

- Training and education of our employees
- Daily Health and Safety meetings and work evaluations
- Management and employee involvement
- Evaluation and correction of unsafe conditions
- Open communication
- Near Miss and Incident Investigation and findings used as educational tools
- PPE Use and Requirements
- Equipment inspections and maintenance
- Use of a "2-Minute Safety Stand Down", in which any employee can remove themselves and others from a situation that does not appear safe OR stop work to call others for input and assistance in evaluating an issue.
- Meet all Federal and State regulatory requirements.

### **Health and Safety Certifications**

ISNetworld Certified, Contractor Qualification, Since 2015  
Common Ground Alliance (Gold Shovel) Certified, Since 2015  
Avetta (PICs) Certified  
ITS Certified, Operator Qualified Excavation  
Veriforce Certified, Operator Qualified Excavation

### **Safety Statistics**

<b>Year</b>	<b>2021</b>	<b>2022</b>	<b>2023</b>
TRIR	0	0	0
DART	0	0	0
EMR	0.89	0.67	0.67

## **Locations**

### **Corporate Office**

402 Hartz Ave, Building C  
Danville, CA 94526  
925-229-2900 Phone

### **Southern California Office**

3272 Greyhawk Court  
Carlsbad, CA 92010  
760-642-2712 Phone

### **Maintenance Yard**

5781 Preston Ave  
Livermore, CA 94551

## **Insurance**

BTI carries comprehensive insurance. We can provide additional insured statements for specific projects. BTI has a \$10 million umbrella policy in addition to our \$1 million of general liability, \$1 million of contractor pollution, \$1 million automobile liability, and \$1 million of workers compensation coverage.

## **Leadership & Key Personnel**

The cumulative background of our environmental management team represents decades of experience in the fields of environmental management, landfill operations and development, disposal, construction, transportation, equipment rental, and hazardous and non-hazardous waste. Our primary objective is to provide our clients with superior cost-effective service regardless of the scope or size of the project.

### **Sharon Bonner-CEO and President**

Sharon Bonner is CEO and President of Bradley Tanks, Inc. She started the company in 1999 and is responsible for the development and application of corporate certifications, policies, contracts, negotiations, finances, and employee management. She has forty years of business development and sales experience. Sharon's work experience includes advertising, sales, business development, and marketing for business growth, client services, and long-term customer relations.

Experience:

Bradley Tanks, Inc, CEO/President, 1999-present

Valley Financial Services, Loan Consultant, 1997-1999

Pacific Bell Directory, Advertising Consultant, 1983-1997

Microland Computers, Senior Account Executive/Trainer, 1981-1983

Hertz Corporation, Rental Sales Manager, 1980-1981

Education:     BS in Organizational Behavior from University of San Francisco  
                  AA in Business Administration from Ohlone College

### **Brad Bonner-Business Development Director**

Brad Bonner is the Business Development Director for Bradley Tanks, Inc. Brad has forty years of experience in the environmental, construction, hazardous waste, and landfill industries. Brad's work in sales and marketing has gained his clients competitive rates and broader visibility in their fields. Utilizing BTI services, he has coordinated small and large waste projects utilizing various forms of transportation and negotiated large project contracts. Brad applies best management practices to operational problem solving. He systematically and efficiently pairs resources to support new opportunities and business growth. He has successfully grown BTI's tank rental services to over 450 tanks and has developed long term rental agreements throughout the United States. His progressive thinking has allowed BTI to stay in the forefront of innovation bringing new designs, concepts, and equipment to the environmental industry that has been useful to many clients.

Brad's work experience covers project management, field work, sales, marketing, customer relations, regulatory compliance, waste characterization and profiling, and management of

office, project-site and sales staff. He successfully led the West Region of Allied Waste Special Waste with 20 landfills, 15 employees and a \$87 million budget.

Experience:

Bradley Tanks Inc, Business Management, 2009 to present (continued)

Allied Waste, Director of Special Waste Sales West Region, 1996-2009

Education: BA in Business from the University of Portland

Certification: OSHA 40 Hour HAZWOPER

**Norm Christensen-Chief Financial Officer**

Norm Christensen works with Bradley Tanks, Inc as the Chief Financial Officer and Responsible Managing Employee (RME). Norm works directly with our insurance group for compliance and supports the CEO in financial planning. Norm is also a lead contact with our equipment manufacturers, a key contact with landfills and provides project oversight as the RME.

Norm's work experience covers market and operations planning, operations, environmental systems, construction, and regulatory compliance. He has been able to bring large corporate best management practices and instill them with BTI, thereby benefiting our clients on many levels.

Experience:

Bradley Tanks, Inc Chief Financial Officer, 2010-present

Allied Waste Industries, Market Area Vice President Bay Area, 1998-2008

Browning Ferris Industries (BFI), Landfill Manager, 1995-1998

Pima Gro, Manager of California Central Valley Operation, 1994-1995

Offset Fuels, Business Manager, 1988-1994

General Dynamics Electronic Division, Production Control Supervisor, 1983-1994

Education: BS in Business Administration/Finance from California State University Fresno

Certification: Contractors License-RME & OSHA 40 Hour HAZWOPER

**Kelly Graser-Director of Compliance**

Kelly Graser is the Director of Compliance at Bradley Tanks, Inc. She has over twenty five years of experience in the environmental, construction, contaminated waste, and landfill industries. She is responsible for the Health and Safety, Human Resources, and Regulatory Compliance and Waste Characterization/Approval departments. She manages long term contracts and invoices for multiple large clients. She also works with the Sales and Marketing department in RFPs, project tracking and estimation. She uses learned best management skills for quality assurance and quality control in all work products. Her previous experience is in regulatory compliance,

technical analytical review, site characterization, landfill waste acceptance, disposal sales and technical writing.

Experience:

Bradley Tanks, Inc, Director of Compliance, 2010 to present

Consultant, Special Waste Projects, 2003-2010

Allied Waste / BFI, Account Manager and Waste Approval Manager 1995–2003

Education: MS in Environmental Science from Baylor University

BS in Natural Resources from University of California, Berkeley

Certification: 40-Hour USACE EM 385-1-1 Certified & 40-Hour HAZWOPER Certified

**Jessica Carr-Director of Transportation**

Jessica Carr is BTI's Director of Transportation and Logistics. She is responsible for the direction of over 80 drivers on a daily basis, driver management, equipment management, truck permits, driver compliance, project estimating for trucks and tanks, and on-site field coordination and support. She controls bi-weekly driver payroll and sub haul and oversees all company invoicing and certified payroll. She has over 20 years of experience in the environmental, construction and contaminated waste transportation. Jessica is the lead of the Carlsbad office.

Jessicas' work experience covers estimating, accounts receivable, billing, project management, field work, sales and marketing, client services, customer relations and waste characterization and profiling.

Experience:

Bradley Tanks, Inc, Director of Transportation, 2010 to present

Denbeste Transportation, Project Estimator / Dispatcher 2004-2010

Education: 2 years at Santa Rosa Junior College towards Business Major

Leadership That Shapes the future-University of Washington

Bilingual in Spanish and English- 14 years of Spanish education at Cali Calmecac Immersion School.

Certification: OSHA 40 Hour HAZWOPER

**Adam Carr-Director of Operations**

Adam Carr is BTI's Director of Operations. He is responsible for on-site work for BTI including truck management, field personnel supervision and health and safety. Adam and his group are BTI's on-site representative to ensure projects are managed smoothly, efficiently and safely. He currently manages BTI's large contracts for on-site field services as well as driver and Hydro/Dry

Vacuum operations pipeline support. He orchestrates daily operations and ER operations. Adam also directs the company in equipment maintenance and repairs for a fleet of over 60 tractors and 100 trailers and over 400 tanks.

Adam has worked in construction, on project sites and in transportation for over 20 years. He has experience with all types of equipment, environmental field applications, problem solves, conducts tailgate meetings and has the strong ability to direct and manage BTI field personnel and drivers.

Experience:

Bradley Tanks, Inc, Director of Operations, 2010 to present

Denbeste Transportation, Project Manager / Dispatcher 2004-2010

Education: First Responder and Emergency Medical Technician Programs, Santa Rosa Junior College

Certification: OSHA 40 Hour HAZWOPER, Confined Space Certified, CPR/First Aid Certified, Operator Qualified Excavation

**Derek Wong – Compliance Program Manager**

Derek Wong works with Bradley Tanks, Inc as the Compliance Program Manager. Working with Kelly Graser (BTI's Director of Compliance), Derek has helped to develop and implement policies and procedures to ensure that BTI is following the regulations set forth by the state and federal agencies for the work that BTI performs.

Derek has twenty-five years of experience with site investigation, remediation, and regulatory compliance. Derek's remediation experience includes construction quality assurance management, and designing and implementing soil excavations. He has conducted and implemented site investigations, including the collection, management, review, and reporting of historical and newly generated data. Derek's field experience includes drilling, sampling of soil using direct-push drilling and augering, and overseeing soil remedial activities. His familiarity with the requirements of federal, state, and local regulatory agencies has allowed him to succeed in developing, coordinating, and implementing cost-effective strategies for numerous sites affected by contaminants.

Experience:

Bradley Tanks, Inc, Compliance Program Manager, January 2022 to present

Innovative and Creative Environmental Solutions, Project Manager, 1998-2021

Education: BA in Environmental Science, University of California, Berkeley

Certification: OSHA 40 Hour HAZWOPER

### **Dave Allen – Manager of Wet Spoils**

Dave Allen works with Bradley Tanks, Inc as the Manager of Wet Spoils. Dave works directly with PG&E personnel on a daily basis to maintain Central Operations Wet Spoils dumping locations for PG&E and all of their contractors. Dave manages and schedules crews and transport vehicles that rotate throughout the PG&E Central Operations yards to process spoils and dispose of them at PG&E approved landfills. Dave is also in charge of BTI's Underground Service Alert account – maintaining active tickets and calling in new tickets.

Dave's work experience comes from the environmental consulting industry where he owned a consulting firm whose clients ranged from large oil companies to independent service station owners, to commercial and residential builders. Dave has extensive work experience with county, state and federal governmental regulatory agencies dealing with environmental pollution assessment and remediation.

Experience:

Bradley Tanks, Inc, Manager of Wet Spoils, 2015 to present

Aqua Science Engineers, Project Engineer, then co-owner 1998-2015

Sun River Construction, Operations Manager 1996-1998

DuPont Environmental, Project Manager 1993-1996

Alpha Consultants, Project Manager 1989-1993

Education: BS in Industrial Technology from San Jose State University

Certifications: OSHA 40 Hour HAZWOPER

### **Joe Griffith-Technical Compliance Manger**

Joe Griffith works with Bradley Tanks, Inc as a Technical Compliance Manager. Joe works directly with our clients to provide project management specializing in hazardous and non-hazardous waste management. He provides efficient, cost saving, waste transportation and disposal solutions for environmental remediation projects and for contaminated waste that results from construction projects. He helps our clients to remain in compliance with applicable regulations and provides industry knowledge for both public and private work while assisting our clients to identify the best disposal facilities for their individual project needs. He also gives client assistance with waste profiling and manifesting.

He has over 25 years of experience in the environmental consulting, contaminated waste management and landfill industries. He worked for Allied Waste/Republic Services for 13 years

eventually managing waste approval for ten separate landfills in Northern California, Utah and the Pacific Northwest. His work experience is in regulatory compliance, technical analytical review, site characterization, landfill waste acceptance and disposal sales.

Experience:

Bradley Tanks, Inc., Technical Compliance Manager, 2012-present

Allied Waste/Republic Services, Special Waste Approval Manager, 1999-2012

EnviroNet Consulting, 1996-1999

County Environmental Health Department 1994

Education: MPH in Environmental Health from Loma Linda University, Loma Linda, CA

BS in Bio-Chemistry from Pacific Union College, Angwin, CA

Certifications: OSHA 40-Hour HAZWOPER

Certified Landfill Manager by SWANA

State of California Registered Environmental Health Specialist (REHS)

**Brien Beaman-Sales Manager**

Brien Beaman works with Bradley Tanks, Inc as the Sales Manager. Brien works directly with our field team, operations team and directors in all Sales and Marketing efforts in the company. He works directly with our manufacturers, suppliers, clients and subcontractors to meet the demands of our business.

Brien's work experience covers project management, quality control, operations and sales, and marketing. His project manager and operations experience has been able to create solutions and cost savings for his clients and our company.

Over the past 12 years, Brien has worked for the Golden State Warriors, Athens Administrators, Creative at Home, and Bradley Tanks, Inc.

Experience:

Bradley Tanks, Inc, Sales Manager / Account Manager, 2017 to present

Creative at Home, California Territory Manager, 2015-2017

Athens Administrators, Sales Support Coordinator and Human Resources Assistant, 2014-2015

Golden State Warriors, Marketing Intern, 2011-2014

Education: BS in Business Administration from Saint Mary's College of California

Certification: OSHA 40 Hour HAZWOPER



### **Jesse Radebaugh - Health and Safety Manager**

Jesse Radebaugh is the Health and Safety Manager for Bradley Tanks Inc. Jesse works directly with the BTI Compliance Department, field teams, and management team on a continual basis. He has proven experience overseeing health and safety policies and updating current systems. He holds a strong knowledge of advanced technologies, such as complex testing equipment, and a dedication to following health and safety regulations. Jesse has over twenty years of experience developing injury prevention plans based on leading and lagging indicators and collective data. He has strong problem-solving skills, incident investigation skills, and the ability to train employees in health and safety policies and procedures.

Jesse has been involved in the construction and maintenance industries for over twenty five years. During that time, he has been directly involved in a wide variety of roles and responsibilities. Some examples of which are Crane Operations, Heavy Equipment Operations, project development, personnel oversight and coordination, project resource loading and project management.

#### Experience:

Bradley Tanks Inc. Health and Safety Manager, 2016 to present.

Conoco Phillips, Well Site Safety Manager, 2013–2016

Jacobs Field Services, Project Safety Manager, 2010–2013

Certification: OSHA 40 Hour HAZWOPER, Confined Space Supervisor, Tier II Rescue training, Operator Qualification training Authorized Evaluator, CPR First Aid , AED Certified, Excavation and trenching Competent person, Smith Systems Train the trainer

### **Scott Fletcher - Account Manager**

Scott Fletcher works with Bradley Tanks, Inc. as an Account Manager. Scott works directly with our directors in all Sales, Estimating, and Project Management efforts in the company. He operates directly with various contractors, public work offices, and clients in securing business opportunities for BTI.

Scott's work experience over the last 21 years has included sales, estimating, and profiling and reviewing analytical data for waste management of soil and groundwater sites. His waste management and project manager experience has allowed him to create solutions and cost savings for his clients and our company.

Experience:

Bradley Tanks Inc. , Account Manager, 2013 to present.

T&D Environmental Services Inc., Project Manager, 2002–2013

Belshire Environmental Services Inc, Account Manager, 1994–2002

Certification: OSHA 40 Hour HAZWOPER